

**PPHLN1 Antibody (N-term)**  
**Affinity Purified Rabbit Polyclonal Antibody (Pab)**  
**Catalog # AP20529a**

**Specification**

---

**PPHLN1 Antibody (N-term) - Product Information**

Application	IF, WB,E
Primary Accession	<a href="#">Q8NEY8</a>
Reactivity	Human
Host	Rabbit
Clonality	Polyclonal
Isotype	Rabbit IgG
Calculated MW	52737
Antigen Region	45-66

**PPHLN1 Antibody (N-term) - Additional Information**

**Gene ID** 51535

**Other Names**

Periphilin-1, Gastric cancer antigen Ga50, PPHLN1

**Target/Specificity**

This PPHLN1 antibody is generated from rabbits immunized with a KLH conjugated synthetic peptide between 45-66 amino acids from the N-terminal region of human PPHLN1.

**Dilution**

IF~~1:25

WB~~1:1000

E~~Use at an assay dependent concentration.

**Format**

Purified polyclonal antibody supplied in PBS with 0.09% (W/V) sodium azide. This antibody is purified through a protein A column, followed by peptide affinity purification.

**Storage**

Maintain refrigerated at 2-8°C for up to 2 weeks. For long term storage store at -20°C in small aliquots to prevent freeze-thaw cycles.

**Precautions**

PPHLN1 Antibody (N-term) is for research use only and not for use in diagnostic or therapeutic procedures.

**PPHLN1 Antibody (N-term) - Protein Information**

**Name** PPHLN1 ([HGNC:19369](#))

**Function** Component of the HUSH complex, a multiprotein complex that mediates epigenetic

repression. The HUSH complex is recruited to genomic loci rich in H3K9me3 and is probably required to maintain transcriptional silencing by promoting recruitment of SETDB1, a histone methyltransferase that mediates further deposition of H3K9me3. In the HUSH complex, contributes to the maintenance of the complex at chromatin (PubMed:[26022416](#)). Acts as a transcriptional corepressor and regulates the cell cycle, probably via the HUSH complex (PubMed:[15474462](#), PubMed:[17963697](#)). The HUSH complex is also involved in the silencing of unintegrated retroviral DNA: some part of the retroviral DNA formed immediately after infection remains unintegrated in the host genome and is transcriptionally repressed (PubMed:[30487602](#)). May be involved in epithelial differentiation by contributing to epidermal integrity and barrier formation (PubMed:[12853457](#)).

#### Cellular Location

Nucleus. Cytoplasm. Chromosome. Note=In undifferentiated keratinocytes expressed in speckle-type nuclear granules and at the nuclear membrane, but in the differentiated keratinocytes colocalized with periplakin at the cell periphery and at cell-cell junctions (PubMed:[12853457](#)) Localizes to chromatin (PubMed:[26022416](#)).

#### Tissue Location

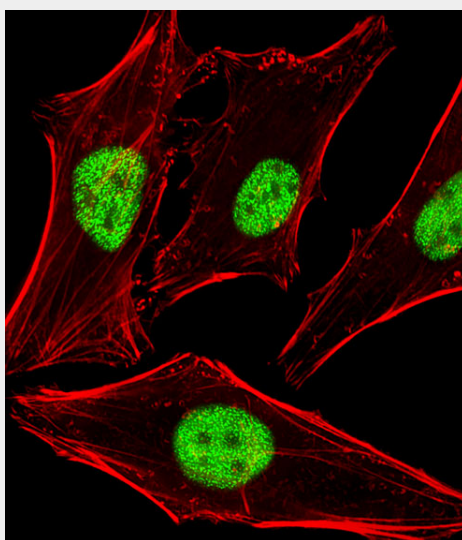
Ubiquitous..

#### PPHLN1 Antibody (N-term) - Protocols

Provided below are standard protocols that you may find useful for product applications.

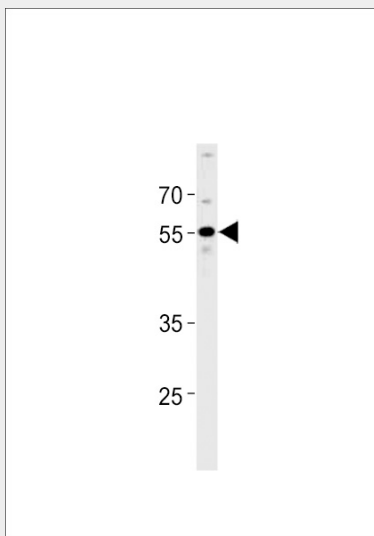
- [Western Blot](#)
- [Blocking Peptides](#)
- [Dot Blot](#)
- [Immunohistochemistry](#)
- [Immunofluorescence](#)
- [Immunoprecipitation](#)
- [Flow Cytometry](#)
- [Cell Culture](#)

#### PPHLN1 Antibody (N-term) - Images



Fluorescent image of HeLa cells stained with PPHLN1 Antibody (N-term)(Cat#AP20529A). AP20529A was diluted at 1:25 dilution. An Alexa Fluor 488-conjugated goat anti-rabbit IgG at

1:400 dilution was used as the secondary antibody (green). Cytoplasmic actin was counterstained with Alexa Fluor® 555 conjugated with Phalloidin (red).



PPHLN1 Antibody (N-term) (Cat. #AP20529a) western blot analysis in A549 cell line lysates (35ug/lane). This demonstrates the PPHLN1 antibody detected the PPHLN1 protein (arrow).

#### **PPHLN1 Antibody (N-term) - Background**

Involved in epithelial differentiation and contributes to epidermal integrity and barrier formation.

#### **PPHLN1 Antibody (N-term) - References**

- Imami K., et al. Anal. Sci. 24:161-166(2008).
- Line A., et al. Br. J. Cancer 86:1824-1830(2002).
- Kazerounian S., et al. J. Biol. Chem. 278:36707-36717(2003).
- Zhang Q.-H., et al. Genome Res. 10:1546-1560(2000).
- Ota T., et al. Nat. Genet. 36:40-45(2004).